



“We Mold Ourselves To Meet Your Needs”

Phone: 800-533-5480

Fax: 620-793-5521

Email: t-c@tcmfg.com

OILFIELD

TC RINGS

REPAIR FLARES

DRESSER COUPLING GASKETS
(Standard & Light Pattern)

STUFFING BOX RUBBERS
(Hard & Soft)

FLANGE GASKETS

HEX GASKETS

WE HAVE WHAT YOU NEED!



If you are looking for TC Rings, Repair Flares, Stuffing Box Rubbers, Packer Adapter Rings, Dresser Coupling Gaskets (standard & light pattern), Hex Gaskets or Flange Gaskets, we have them.

T&C Rings

2 ³/₈" Full Ring
2 ³/₈" ³/₄ Ring
2 ³/₈" ¹/₂ Ring

2 ⁷/₈" Full Ring
2 ⁷/₈" ³/₄ Ring
2 ³/₈" ¹/₂ Ring

2 ¹/₁₆" Full IJ Ring
2 ¹/₁₆" ¹/₂ IJ Ring

3 ¹/₂" Full Ring
3 ¹/₂" ³/₄" Ring
3 ¹/₂" ¹/₂ Ring

Repair Flares

2 ³/₈" and 2 ⁷/₈"

We have stabbing cones and drifts for rent for the 2 ³/₈" , 2 ⁷/₈" and 3 ¹/₂" Rings

FLANGE GASKETS



**8-Hole, Full Face Flange Gaskets
150psi-1/8" thick-SBR Rubber**

2"	10"
2.5"	12"
3"	14"
4"	16"
5"	18"
6"	20"
8"	24"

PACKER ADAPTER RINGS

Baker Packer Dol-22

2 ³/₈"
2 ⁷/₈"
3 ¹/₂"

Halliburton Packer DOL-188

2 ³/₈"
2 ⁷/₈"
3 ¹/₂"

HEX GASKETS

2"
2 ¹/₂"
3"
4"
6"
8"
10"

STUFFING BOX RUBBERS

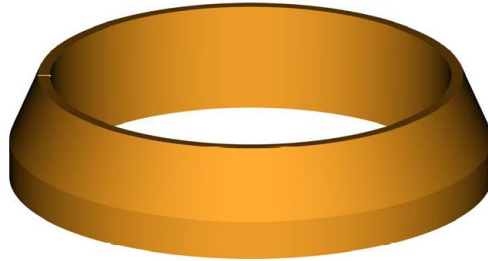
1 ¹/₂" Soft & Hard
1 ³/₄" Soft
1 ³/₈" Soft

DRESSER COUPLING GASKETS

STYLE 38 & 40

Standard

Nitrile (Oil Resistant) Rubber or Viton
Please specify when ordering



PIPE O.D.	PART #	CROSSECTION
2 3/8"	44	1/2" x 29/32"
2 7/8"	50	1/2" x 29/32"
3 1/2"	42	1/2" x 29/32"
4"	205	1/2" x 29/32"
4 1/2"	46	1/2" x 29/32"
5 1/2"	206	1/2" x 29/32"
6"	166	1/2" x 1"
6 5/8"	57	1/2" x 1"
7"	214	1/2" x 1"
8"	167	1/2" x 1"
8 5/8"	165	1/2" x 1 1/16"
10"	168	1/2" x 1 1/16"
10 3/4"	169	1/2" x 1 1/16"
12"	170	1/2" x 1"
12 3/4"	164	1/2" x 1 1/16"
14"	373	1/2" x 1 1/8"
15"	335	1/2" x 1 1/8"
16"	345	1/2" x 1 1/8"

DRESSER COUPLING GASKETS
STYLE 38 & 40 LIGHT PATTERN

PIPE O.D.	PART #	CROSS SECTION
3.500"	329	3/8" X 7/8"
4.500"	503	3/8" X 7/8"
5.500"	507	3/8" X 7/8"
6.000"	328	3/8" X 7/8"
6.625"	508	3/8" X 7/8"
8.000"	504	3/8" X 7/8"
8.625"	509	3/8" X 7/8"
10.750"	538	3/8" X 7/8"

STYLE P GASKETS

PIPE O.D.	PART #
1/2"	60
3/4"	51
1"	52
1 1/4"	53
1 1/2"	54
2"	47
2 1/2"	25
3"	48
4"	221